

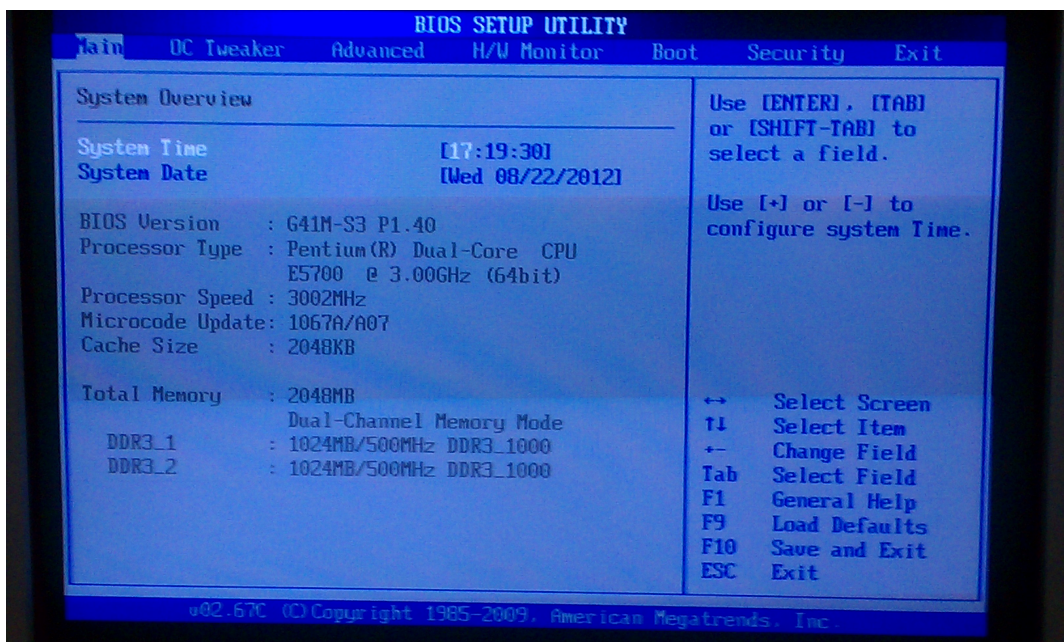
# Settings(99)

## JB-199 turning "on" and "off" repeatedly after powering "on".

If you have a mother board, showed on the picture below...



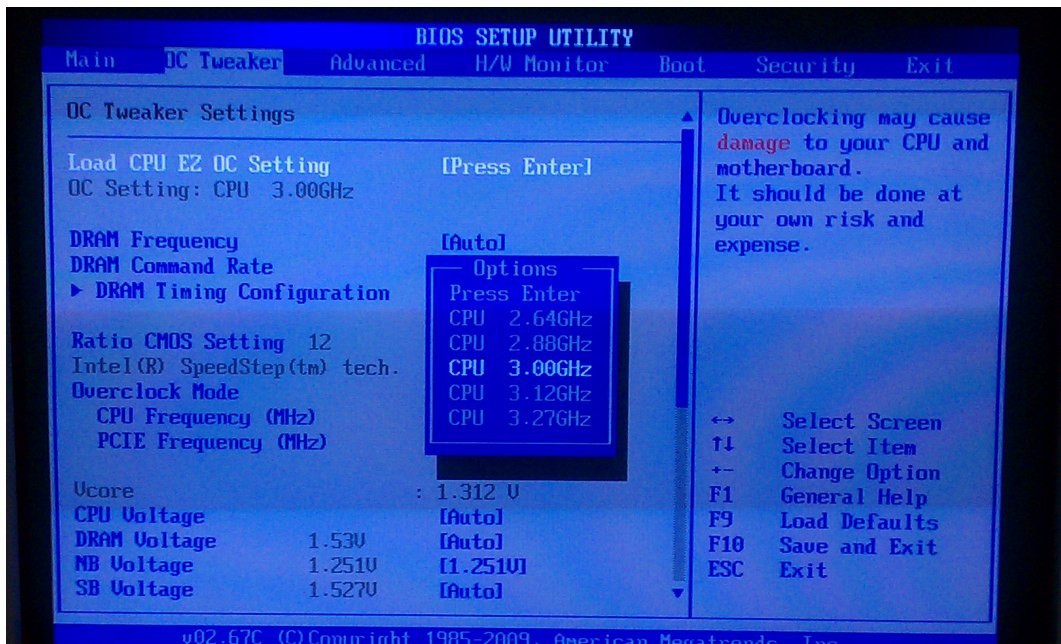
1. Unplug the power cord.
2. Press and hold the "Power On" button.
3. Turn the JB-199 on and start to press "Delete" button to go to "BIOS". If you cannot to finish this step, due to JB-199 turning "on" and "off", unplug the power cord, press few times the "Power On" button. And try to go to BIOS again. Then you will see similar screen...



4. Go to the "OC Tweaker" menu item. (Left top corner of the image.)

# Settings(99)

5. Press "Enter" button on the "Load CPU EZ OC Setting" and change the frequency in the "Options" submenu to "CPU 3.00GHz". Then press enter, to save this option, after that "F10" and "Enter" to save the new BIOS settings and exit.



Unique solution ID: #1247

Author: Anton

Last update: 2012-08-25 02:27